



2013 SCHEDULE

FEBRUARY

8	Northwestern!	12:30 p.m.
8	Bradley!	5:30 p.m.
9	Cal Poly!	9:00 a.m.
9	San Diego State!	2:00 p.m.
10	(14) Florida!	8:30 a.m.
15	Nebraska#	4:00 p.m.
15	Drake#	6:00 p.m.
16	Southern Utah#	4:00 p.m.
16	Purdue#	6:00 p.m.
17	Utah State#	1:00 p.m.
21	Oklahoma\$	3:30 p.m.
21	Long Beach State\$	6:00 p.m.
22	Ohio State\$	6:00 p.m.
22	Loyola Marymount\$	8:30 p.m.
23	LSU\$	5:00 p.m.

MARCH

1	UC Riverside~	4:00 p.m.
1	Boston~	6:00 p.m.
2	Boston~	4:00 p.m.
2	Portland State~	6:00 p.m.
3	Portland State~	11:00 a.m.
8	Boise State	7:00 p.m.
9	Boise State	5:00 p.m.
9	Boise State	7:00 p.m.
14	Virginia Tech^	11:00 a.m.
14	Notre Dame^	1:30 p.m.
15	Penn State^	12:30 p.m.
15	Michigan^	3:00 p.m.
16	Oklahoma^	3:00 p.m.
23	Washington*	6:00 p.m.
24	Washington*	2:00 p.m.
25	Washington*	7:00 p.m.
28	@ Utah*	6:00 p.m.
29	@ Utah*	6:00 p.m.
30	@ Utah*	12:00 p.m.

APRIL

2	California*	5:00 p.m.
2	California*	7:30 p.m.
3	California*	12:00 p.m.
6	UC Santa Barbara	6:00 p.m.
7	UC Santa Barbara	12:00 p.m.
9	@ New Mexico State	4:00 p.m.
9	@ New Mexico State	6:00 p.m.
12	@ Oregon*	5:00 p.m.
13	@ Oregon*	2:00 p.m.
14	@ Oregon*	12:00 p.m.
18	UCLA*	7:00 p.m.
19	UCLA*	5:00 p.m.
20	UCLA*	7:00 p.m.
26	@ Oregon State*	3:00 p.m.
27	@ Oregon State*	3:00 p.m.
28	@ Oregon State*	11:00 a.m.

MAY

3	Arizona State*	6:00 p.m.
4	Arizona State*	6:00 p.m.
5	Arizona State*	12:00 p.m.
9	@ Stanford*	7:00 p.m.
10	@ Stanford*	7:00 p.m.
11	@ Stanford*	12:00 p.m.
18-19	NCAA Regional	TBA
25-26	NCAA Super Regional	TBA
30-31	Women's College World Series	TBA

JUNE

1-5	Women's College World Series	TBA
-----	------------------------------	-----

Home; Neutral site; (NFCA Ranking); ! - Kajikawa Classic // Tempe, Ariz.; # - Hillenbrand Invitational // Tucson; \$ - Mary Nutter Collegiate Classic // Palm Springs, Calif.; ~ - Wildcat Invitational // Tucson; ^ - Judi Garman Classic // Fullerton, Calif.; *Pac-12 Game Times local to site

ARIZONA SOFTBALL™

ATHLETIC MEDIA RELATIONS // Danny Martinez // danny89@email.arizona.edu // O: 520-621-4163 // C: 520-409-1810 // F: 520-621-2681 // arizonawildcats.com

WEEK 1 NOTES (Feb. 8-10): KAJIKAWA CLASSIC // Tempe, Ariz.

	Arizona	Northwestern	Bradley	Cal Poly	San Diego State	Florida
2012 Record	37-19	29-29	21-30	13-36	32-24	48-13
2012 Conference Record	12-12 (Pac-12)	14-10 (Big Ten)	11-15 (MVC)	5-16 (Big West)	9-3 (MWC)	21-7 (SEC)
NFCA Ranking	13th	RV	N/A	N/A	N/A	14
USA Ranking	14th	RV	N/A	N/A	N/A	15
Head Coach	Mike Candrea	Kate Drohan	Amy Hayes	Jenny Condon	Kathy Van Wyk	Tim Walton
Record (Years at School)	1,310-296-2 (27)	386-206-1 (11)	75-133 (4)	200-150 (7)	541-374-1 (16)	379-93 (10)
Streak	N/A	N/A	N/A	N/A	N/A	N/A
Last 5	N/A	N/A	N/A	N/A	N/A	N/A
Last 10	N/A	N/A	N/A	N/A	N/A	N/A

2012 Team Stats (NCAA Rank)

Batting Avg	.298 (34th)	.286 (65th)	.246 (216th)	.230 (253rd)	.286 (64th)	.292 (45th)
Home Runs	80 (6th)	52 (38th)	14 (246th)	15 (235th)	58 (23rd)	68 (19th)
ERA	2.94 (107th)	3.93 (202nd)	3.39 (154th)	4.88 (249th)	2.39 (53rd)	1.44 (6th)
Fld Percentage	.977 (6th)	.958 (144th)	.958 (144th)	.964 (74th)	.959 (138th)	.974 (17th)

2012 Individual Leading Returner (NCAA Rank)

Batting Avg	Hallie Wilson - .346 (245th)	Marisa Bast - .411 (30th)	M. Lynch-Crumine - .299 (N/A)	Kim Westlund - .322 (N/A)	Hayley Miles - .429 (18th)	Kelsey Horton - .329 (N/A)
Home Runs	Brigitte Del Ponte - 15 (39th)	Marisa Bast - 13 (91th)	Baileigh Basham - 3 (N/A)	Mariah Cochiolo - 3 (N/A)	Hayley Miles - 20 (10th)	Lauren Haeger - 14 (83rd)
RBI	Brigitte Del Ponte - 56 (25th)	Marisa Bast - 68 (8th)	Baileigh Basham - 23 (N/A)	Kim Westlund - 25 (N/A)	Hayley Miles - 49 (59th)	Lauren Haeger - 52 (73rd)
ERA	Kenzie Fowler - 2.85 (213th)	Meghan Lamberth - 3.62 (N/A)	M. Lynch-Crumine - 2.64 (185th)	Chloe Wurst - 4.71 (N/A)	Rebecca Arbino - 2.02 (87th)	Hannah Rogers - 1.23 (6th)
Strikeouts	Kenzie Fowler - 180 (33rd)	Amy Letourneau - 117 (135th)	M. Lynch-Crumine - 84 (N/A)	Chloe Wurst - 51 (N/A)	Hayley Miles - 107 (261st)	Hannah Rogers - 202 (140th)

Series History

All-Time	-	Arizona 15-2	First Meeting	Arizona 2-0	Arizona 19-6	Arizona 5-2
2012	-	N/A	N/A	N/A	Arizona 2-0	N/A
Last Meeting	-	2/13/10 - UA 4-3	N/A	2/13/11 - UA 14-0 (5)	3/28/12 - UA 8-6 (8)	5/28/09 - UF 3-0
Streak	-	Arizona W1	N/A	Arizona W2	Arizona W12	Florida W2

THE GAMES

Date	Time (PDT)	Opponent	Location
Friday, Feb. 8	12:30 p.m.	Northwestern	Tempe Sports Complex (SE Field)
Friday, Feb. 8	5:30 p.m.	Bradley	Tempe Sports Complex (SE Field)
Saturday, Feb. 9	9:00 a.m.	Cal Poly	Tempe Sports Complex (SE Field)
Saturday, Feb. 9	2:00 p.m.	San Diego State	Tempe Sports Complex (SE Field)
Sunday, Feb. 10	8:30 a.m.	(14/15) Florida	Farrington Stadium

FOLLOW THE CATS

Live Audio: An online audio stream of the games will be available at <http://www.ustream.tv/channel/ua-athletics>

Live Stats: Find Gametracker links for all games at <http://www.arizonawildcats.com/scoreboard/>

Live Updates: Twitter: @UA_Softball (twitter.com/ua_softball) & Facebook: Arizona Athletics (facebook.com/arizonaathletics)

LEADING OFF

- 2013 marks the seventh consecutive year that Arizona has started its season at the Kajikawa Classic.
- Arizona has competed in the Kajikawa Classic (previously the ASU Invitational, Coca Cola Classic and Fiesta Bowl Classic) 15 times and has a 108-18 record. That's a .857 winning percentage.
- The 2013 Cats will feature nine newcomers (six freshmen and three transfers) to just seven returning players.
- Eight players are gone from the 2012 team and they take with them 60% of the runs scored, 52% of the hits, 80% of the home runs and 58% of the runs batted in from last year's team.
- Brigitte Del Ponte, who moved from third base to shortstops due to a departure from the team weeks before the start of the season, sits in the Arizona top 10 in home runs (53 - 8th), RBI (195 - t10th) and assists (356 - 9th) and with just three doubles will crack the top 10 in that category (45-11th).
- In 2013, Arizona will debut copper helmets and a silver-to-blue ombre helmet in addition to its revamped traditional blue-to-red carbon ombre helmet.

QUICK FACTS

GENERAL INFORMATION

Location Tucson, Ariz.
 Enrollment 40,300
 Nickname Wildcats
 Colors Cardinal and Navy
 Conference Pac-12
 Home Field Hillenbrand Stadium (2,956)
 President Ann Weaver Hart
 Athletics Director Greg Byrne
 Faculty Representative Jory Hancock
 SWA/Senior Assoc. A.D. Rocky LaRose

COACHING STAFF

Head Coach **Mike Candrea**
 Alma Mater Arizona State '78
 Year at Arizona 28th year
 Division I Record 1,310-296-2 (.815)
 Record at Arizona Same
 Phone (520) 621-4920
Associate Head Coach **Stacy Iveson**
 Alma Mater Arizona '90
 Year at Arizona 9th year (96-01, 12-13)
 Phone (520) 621-8208
Assistant Coach **Alicia Hollowell**
 Alma Mater Arizona '06
 Year at Arizona 2nd year
 Phone (520) 621-7527
Volunteer Assistant Coach **Mark Blair**
 Alma Mater UTEP '75
 Year at Arizona 1st Year
Undergraduate Assistant Coach **Jessica Spigner**
 Years at Arizona 1st year
Director of Operations **Caitlin Lowe**
 Alma Mater Arizona '07
 Year at Arizona 1st Year

2012 IN REVIEW

2012 Record 38-19
 2012 Pac-12 finish 12-12 // 4th
 2012 Postseason record 3-2
 Postseason finish Norman Super Regional (0-2)

2013 PREVIEW

All-Pac-12 Returnees

1st Team N/A
 2nd Team 3B Brigette Del Ponte, OF Hallie Wilson
 Position Starters Returning/Lost 3/5
 Pitchers Returning/Lost 2/0
 Letterwinners returning/Lost 7/9

COMMUNICATIONS SERVICES

Communications Services Director TBA
 Softball Contacts Danny Martinez
 Email danny89@email.arizona.edu
 Cell Phone (520) 409-1810
 Media Relations Phone (520) 621-4163
 Media Relations Fax (520) 621-2681
 Media Relations Mailing Address
 Danny Martinez
 McKale Center, Room 106
 University of Arizona
 Tucson, AZ 85721-0096
 Press Box Phone (520) 621-7496
 Website arizonawildcats.com

INTERVIEW POLICY

Practice: Players and coaches are available to the media 30 minutes prior to the start of each practice. Contact Danny Martinez for practice times.

Post Game: Players and coaches are available on the field after each home game. Find Danny Martinez with interview requests. Players are available only after game two of a doubleheader.

PROBABLE STARTERS (2012 Stats)

No.	Name (Bats)	Pos.	Year	Hometown (Last School)	GP/GS	Avg.	HR	RBI
3	Chelsea Suitsos (LH)	LF	RS So.	Elk Grove, Calif. (Elk Grove H.S.)	55/55	.310	0	12
55	Mandie Perez (LH)	2B	Fr.	Whittier, Calif. (Whittier Christian H.S.)	N/A	N/A	N/A	N/A
5	Hallie Wilson (LH)	1B	So.	Santa Ana, Calif. (Foothill H.S.)	56/56	.346	2	28
4	Brigette Del Ponte (RH)	SS	Sr.	Peoria, Ariz. (Sunrise Mountain H.S.)	57/57	.328	15	56
77	Chelsea Goodacre (LH)	DP	So.	Temecula, Calif. (Temecula Valley H.S.)	55/54	.252	8	24
24	Kelsey Rodriguez (RH)*	C	Jr.	Scottsdale, Ariz. (Pacific)	54/54	.325	5	33
9	Lauren Young (RH)	3B	Fr.	Anaheim Hills, Calif. (Canyon H.S.)	N/A	N/A	N/A	N/A
18	Courtney Rodriguez	RF	Fr.	Scottsdale, Ariz. (Legacy H.S.)	N/A	N/A	N/A	N/A
7	Alex Lavine (RH)	CF	Jr.	Glendale, Ariz. (Mountain Ridge H.S.)	41/4	.125	1	5

RESERVES

No.	Name (Bats)	Pos.	Year	Hometown (Last School)	GP/GS	Avg.	HR	RBI
00	Darcy Taylor (RH)	1B	Fr.	Jenks, Okla. (Jenks H.S.)	N/A	N/A	N/A	N/A
6	Nancy Bowling (RH)	P/3B	Fr.	Simi Valley, Calif. (Royal H.S.)	N/A	N/A	N/A	N/A
12	Shelby Babcock (RH)	P	Jr.	Broomfield, Colo. (Legacy H.S.)	-	-	-	-
19	Kenzie Fowler (RH)	P	Sr.	Tucson, Ariz. (Canyon del Oro H.S.)	-	-	-	-
28	Gabbie Sandstedt (RH)	OF	Fr.	Glendale, Ariz. (Mountain Ridge H.S.)	N/A	N/A	N/A	N/A
32	Estela Piñon (RH)*	P	Jr.	Prescott, Ariz. (Yavapai College)	60/60	.365	9	62

PITCHERS

No.	Name	Pos.	Year	W-L	ERA	BAA	SO	IP
19	Kenzie Fowler	RHP	Jr.	15-9	2.85	.218	180	154.2
12	Shelby Babcock	RHP	So.	21-10	3.02	.240	164	197.0
6	Nancy Bowling	RHP	Fr.	N/A	N/A	N/A	N/A	N/A
32	Estela Piñon	RHP	Jr.	N/A	N/A	N/A	N/A	N/A

OPPONENTS:

Northwestern: The Wildcats (0-0) finished 2012 29-29 and 14-10 in the Big Ten. Northwestern is receiving votes in both the NFCA and the USA Softball polls. Marisa Bast is the leading offensive returner; Bast's .411 batting average, 13 home runs and 68 RBI led all Wildcat returners. Meghan Lamberth had a 3.62 ERA in 2012 while Amy Letourneau struck out 117 batters.
Series History: Arizona 15-2 // *First Meeting:* 1989 // *Last Meeting:* 2/13/2010; Arizona 4, Northwestern 3; Tempe, Ariz. (Kajikawa Classic)

Bradley: The Bears (0-0) finished 2012 21-30 and 11-15 in the Missouri Valley Conference. Bradley is unranked in both polls. Madeline Lynch-Crumine leads the Bears with a 2.64 ERA, 84 strikeouts and a .299 batting average at the plate. Bailiegh Basham's three home runs and 23 RBI lead all returners.
Series History: First meeting // *First Meeting:* N/A // *Last Meeting:* N/A

Cal Poly: The Mustangs (0-0) finished 2012 13-36 and 5-16 in the Big West. Cal Poly is unranked in both polls. Chloe Wurst returns to lead the way in the circle; Wurst's 2012 ERA of 4.71 and 51 strikeouts lead the team. Kim Westlund's .322 batting average and 25 RBI lead all returners
Series History: Arizona 2-0 // *First Meeting:* 2010 // *Last Meeting:* 2/13/2011; Arizona 14, Cal Poly 0 (5 innings); Tempe, Ariz. (Kajikawa Classic)

San Diego State: The Aztecs (0-0) finished 32-24 and 9-3 in the Mountain West Conference. San Diego State is unranked in both polls. Hayley Miles hit .429 in 2012 with 20 home runs and 49 RBI, good for top 60 nationally in all three categories. Miles also shines in the circle with 107 strikeouts last season.
Series History: Arizona 19-6 // *First Meeting:* 1982 // *Last Meeting:* 3/28/2012; Arizona 8, San Diego State 6 (8 innings); Tucson, Ariz.

Florida: The Gators (0-0) finished 2012 48-13 and 21-7 in the Southeastern Conference. Florida is ranked 14th by the NFCA and 15th by USA Softball. Hannah Rogers' 1.06 ERA was sixth nationally in a 2012 season in which she struck out 202 batters. Lauren Haeger provides the power (14 HR, 52 RBI) while Kelsey Horton sets the table (.329 batting average) for the Gators.
Series History: Arizona 5-2 // *First Meeting:* 1997 // *Last Meeting:* 5/28/2009; Florida 3, Arizona 0; Oklahoma City, Okla. (Women's College World Series)

HEAD COACH MIKE CANDREA: Arizona head coach Mike Candrea is in his 28th year at the helm of the Arizona softball program with a career record of **1,310-296-2 (.815)**. A winner of eight national championships (1991, 1993, 1994, 1996, 1997, 2001, 2006, 2007), Arizona has made 22 trips to the Women's College World Series under his guidance, missing just thrice in the last 25 years (2004, 2011, 2012). In 2012, Candrea became the sport's fastest ever, and second all-time, to reach 1,300 wins. Under Candrea, Arizona has a spectacular postseason record of 151-45. An even 50 All-Americans with a staggering 90 total citations have played in the program since Candrea took over.

THE RANKINGS: Arizona begins the season ranked 13th in the USA Today/NFCA Division I Top 25 Poll and 14th in the ESPN.com/USA Softball Collegiate Top 25. The Wildcats finished 2012 ranked 13th in both polls.

QUICK HITS

Overall Record	38-19
Pac-12 Record	12-12
Home Record	24-5
Road Record	4-10
Neutral Record.....	10-4
Streak	N/A
Last 5 Games	N/A
Last 10 Games.....	N/A
Day Record.....	26-10
Night Record	12-9

RANKINGS

USA Today/NFCA Ranking.....	13th
ESPN.com/USA Softball Ranking	14th

ACTIVE HITTING STREAKS (Season Long)

N/A

MULTIPLE HIT GAMES (2012)

Hallie Wilson	18 games
Brigitte Del Ponte.....	18 games
Chelsea Suitsos.....	13 games
Chelsea Goodacre	11 games

MULTIPLE RBI GAMES

Brigitte Del Ponte.....	14 games
Chelsea Goodacre	7 games
Hallie Wilson	7 games
Chelsea Suitsos.....	2 games
Alex Lavine.....	1 game

UNIFORM RECORDS (Top/Bottom)

White/White	0/0
Gray/Gray	0/0
Red/White	0/0
Blue/White	0/0
Blue/Blue	0/0

ARIZONA VS. THE CONFERENCES

America East.....	0/0
ACC	0/0
Big 10	0/0
Big-12.....	0/0
Big East.....	0/0
Big Sky	0/0
Big West	0/0
Missouri Valley.....	0/0
Mountain West.....	0/0
Pac-12	0/0
SEC.....	0/0
WAC.....	0/0

RECENT RESULTS: The Wildcats were swept at the hands of Keilani Ricketts and the eventual national runner-up Oklahoma in the Norman Super Regional. Ricketts held Arizona to a .182 batting average and did not allow an earned run in 14 innings. OU outscored Arizona 13-1 in the two games. The lone Wildcat standout was Brigitte Del Ponte, who hit .400 in the series.

May 25, 2012: Cats Drop Game One to Oklahoma - Thirteenth-seeded Arizona will have to sweep Saturday's doubleheader to continue its season after fourth-seeded Oklahoma beat the Cats 6-0 on Friday.

Arizona recorded seven hits and had runners in scoring position in each of the three first innings but could not score. UA did not have an extra-base hit in the game.

OU hurler Keilani Ricketts dealt the complete-game shutout that included nine strikeouts and just one walk. Ricketts improved to 32-8 on the season.

Arizona starter Shelby Babcock allowed six runs on eight hits in the loss. Babcock walked four, hit three and struck out six in her complete-game effort. Babcock fell to 21-10 on the season.

May 26, 2012: Arizona Eliminated by Oklahoma - Fourth-seeded Oklahoma (50-8) routed 13th-seeded Arizona (38-19) to get to the Women's College World Series for the second consecutive season, leaving Arizona home in June for just the third time in the last 25 years.

The Sooners plated five runs in the first inning and cruised to a 7-1 win in game two of the NCAA Super Regional.

Arizona fell short of the 40-win mark for just the first time since 1986 with the loss.

Kenzie Fowler allowed seven runs on nine hits while walking five, hitting one and striking out two in five and a third innings of work. Fowler allowed the first six batters she faced to reach and issued a pair of RBI free passes in the first inning. Fowler finished the season 15-9 on the season. Shelby Babcock relieved Fowler with one out in the sixth inning and retired five of the six batters she faced.

OU starter Keilani Ricketts did not allow an earned run in her three-hit, 13-strikeout complete game. At one point, Ricketts struck out nine straight Wildcats from the third to the fifth inning. Ricketts improved to 33-7 on the season.

WHO'S HOT?

Brigitte Del Ponte: The senior put up mind-blowing numbers in the fall when she recorded a hit in 16 of her 24 at-bats (.667) including six doubles and a home run. Del Ponte drove in six runs and scored 11 of her own. In the 2012 NCAA Tournament, Del Ponte was 10-for-14, meaning she is 26-of-her-last-38 (including fall exhibition season), good for an unconscious .684 batting average.

Alex Lavine: The junior has compiled just a .224 batting average in her two seasons. That was before she switched to left side of the plate and began slapping. Seeing her first collegiate pitching from the opposite side of the plate, Lavine batted .583 in the fall in 12 at-bats.

Chelsea Goodacre: Goodie batted in 14 runs while slugging an even 1.000 in the fall. When half of your hits land over the fence (4-of-8), it's easy to see how. The sophomore batted .364 in eight games.

Mandie Perez: Though the freshman had just five hits in the fall, she made them count. Perez notched a double, a triple and a home run while batting in eight and scoring four runs.

Nancy Bowling: The freshman led all pitchers in ERA in the fall while going 2-0 and posting a stellar K/BB ratio of 29/2. Bowling made five fall appearances and put together a couple of standout outings. Bowling pitched four innings of a perfect game and in another game struck out 11 of the 13 batters she faced, including nine-in-a-row at one point.

A FAMILIAR BEGINNING: This year marks the seventh consecutive season (and ninth overall) Arizona has begun its season in Tempe for the Kajikawa Classic. Arizona is 31-10 when starting the season there. Overall, the Wildcats are making their 26th trip to the tournament, formally known as the ASU Invitational, Coca Cola Classic and Fiesta Bowl Classic. UA carries an overall record of 108-18 in the event.

2012 AT A GLANCE: UA finished 37-19 in 2012, failing to reach 40 wins for the first time since 1986. Arizona's win total, however, was affected by the six rainouts Arizona experienced during the season. The Wildcats' 12-12 conference record, tying them for fourth in the Pac-12. As the 13 seed in the NCAA Tournament, Arizona hosted its own regional, going 3-0 and outscoring its opponents 26-5 to advance to the super regionals. In the next round, however, Arizona would not enjoy similar fortune. UA traveled to the Norman Super Regional to face fourth-seeded Oklahoma. The Cats were outscored 13-1 and eliminated from the tournament. This marked the third time in 25 years and second-consecutive season in which Arizona failed to make the Women's College World Series.

RECORD WHEN...

Total.....	38-19	Opp. scores first.....	11-10
Conference.....	12-12	After 4 leading.....	30-4
Non-Conf.....	26-7	After 4 trailing.....	4-13
Home.....	24-5	After 4 tied.....	4-2
Away.....	4-10	After 5 leading.....	23-1
Neutral.....	10-4	After 5 trailing.....	2-15
Day.....	25-10	After 5 tied.....	4-3
Night.....	13-9	After 6 leading.....	20-0
vs Left.....	2-3	After 6 trailing.....	1-17
vs Right.....	36-16	After 6 tied.....	2-2
1-Run games.....	3-4	Hit 0 home runs.....	7-11
2-Run games.....	8-3	Hit 1 home run.....	12-2
5+Run games.....	25-6	Hit 2+ home runs.....	19-6
Extra inns.....	2-1	Opponent 0 home runs.....	26-5
Shutouts.....	16-5	Opponent 1 home run.....	10-4
Scoring 0-2 runs.....	1-10	Opponent 2+ HRs.....	2-10
Scoring 3-5 runs.....	11-4	Made 0 errors.....	28-7
Scoring 6-9 runs.....	22-4	Made 1 error.....	7-6
Scoring 10+ runs.....	4-1	Made 2+ errors.....	3-6
Opponent 0-2 runs.....	29-2	Opp. made 0 errors.....	5-6
Opponent 3-5 runs.....	7-5	Opp. made 1 error.....	12-6
Opponent 6-9 runs.....	2-8	Opp. made 2+ errors.....	21-7
Opponent 10+ runs.....	0-4	Out-hit opponent.....	31-4
Scored in 1st inning.....	15-7	Out-hit by opponent.....	4-13
Scores first.....	27-9	Hits are tied.....	3-2

TEAM GAME HIGHS

Batting

At bats:	35	Oregon (Apr 29, 2012)
Runs scored:	14	North Dakota (Feb 17, 2012)
Hits:	15	Oregon State (May 10, 2012)
RBI:	12	North Dakota (Feb 17, 2012)
	12	Oregon State (May 10, 2012)
Doubles:	5	Col. of Charleston (Mar 02, 2012)
Triples:	1	Stanford (Mar 30, 2012)
	1	North Dakota State (May 18, 2012)
Home runs:	5	New Mexico (Apr 18, 2012)
Total bases:	26	Oregon State (May 10, 2012)
	26	Notre Dame (May 20, 2012)
Walks:	9	Long Beach State (Feb 26, 2012)
Strikeouts:	13	Oklahoma (May 26, 2012)
Sac hits:	4	Texas A&M (Feb 11, 2012)
Sac flies:	1	(7 times)
Stolen bases:	6	Col. of Charleston (Mar 04, 2012)
Hit by pitch:	4	UC Davis (Mar 16, 2012)
Caught Stealing:	1	(5 times)
Runners LOB:	12	Long Beach State (Feb 26, 2012)
Hit into DP:	2	Syracuse (Feb 25, 2012)

Fielding

Putouts:	24	San Diego State (Mar 28, 2012)
	24	Oregon (Apr 29, 2012)
Assists:	13	Washington (Apr 05, 2012)
Errors:	5	Oregon (Apr 28, 2012)
Passed balls:	2	(4 times)
DPs turned:	2	Western Kentucky (Feb 18, 2012)

Pitching

Innings pitched:	8.0	San Diego State (Mar 28, 2012)
	8.0	Oregon (Apr 29, 2012)
Runs allowed:	12	Oregon (Apr 28, 2012)
Earned runs:	11	Oregon (Apr 28, 2012)
Walks allowed:	10	Arizona State (Mar 24, 2012)
Strikeouts:	12	Col. of Charleston (Mar 02, 2012)
Hits allowed:	13	Oregon (Apr 28, 2012)
	13	Oregon (Apr 27, 2012)
Doubles allowed:	3	Oregon (Apr 27, 2012)
Triples allowed:	1	(4 times)
Homers allowed:	3	New Mexico State (Mar 21, 2012)
Wild pitches:	3	CSUN (Feb 12, 2012)
Hit batters:	3	Oklahoma (May 25, 2012)

FRESH FACES: Nine Wildcats will be putting on the Arizona uniform for the first time this weekend. Compare that to just seven returning players. Three of the nine newbies are junior transfers -- Kellie Fox (UCLA - ineligible to compete this season due to NCAA transfer rules), Estela Piñon (Yavapai College) and Kelsey Rodriguez (Pacific) -- and six are freshmen -- Nancy Bowling (Simi Valley, Calif.), Mandie Perez (Whittier, Calif.), Courtney Rodriguez (Scottsdale, Ariz.), Gabby Sandstedt (Glendale, Ariz.), Darcy Taylor (Jenks, Okla.) and Lauren Young (Anaheim Hills, Calif.).

FAMILY TIES: In 27 years, head coach Mike Candrea has never had sisters come through the program, in 2013, he has two pairs. Siblings Kelsey and Courtney Rodriguez are the first pair of sisters to ever be on the same Wildcat team. UCLA transfer Kellie Fox is the sister of former Wildcat shortstop and two-time national champion Kristie Fox (04-07).

BDP: In just three seasons, Brigette Del Ponte already finds herself in the Arizona career top 10 for home runs (8th - 53), runs batted in (10th - 195) and assists (9th - 356).

ALL-CONFERENCE: Four Wildcats were named all-Pac-12 in 2012, two of whom return. Brigette Del Ponte and Hallie Wilson were named to the conference's second team. Shelby Pendley, who left the team after her freshman season, was named to the first team and departed senior Lini Korja joined Del Ponte and Wilson on the second team. Current Arizona undergraduate assistant coach Jessica Spigner received honorable mention kudos. Pendley and Wilson were also named to the conference's all-freshman team. Chelsea Goodacre and Chelsea Suits received honorable mention citations for first-year-players.

AT THE KAJIKAWA: Arizona's seven returners have made a combined 58 appearances at the Kajikawa Classic. Brigette Del Ponte has hit it well in the tournament; the senior has posted a .395 average with five doubles and five home runs while driving in 12 runs in three years at the Kajikawa. In her first collegiate action in 2012, Hallie Wilson posted a .455 average while clouting five doubles and scoring five runs.

NEARING THE CENTURY MARK: Kenzie Fowler has 79 career wins, eighth most in program history. With 21 wins in 2013, Fowler would become the eighth pitcher in Wildcat history to reach the 100-win milestone (Alicia Hollowell - 134, Nancy Evans - 124, Jennie Finch - 119, Carrie Dolan - 103, Becky Lemke - 103, Susie Parra - 101 and Taryne Mowatt - 100). Fowler is also on pace to become the fourth pitcher in school history to strike out one thousand batters. Her quest to 100 wins and 1,000 strikeouts will be hampered, though, by her recovery from back surgery, which will keep her out of the first month, or so, of the season.

UP NEXT: Arizona hosts the Hillenbrand Invitational Feb. 15-17. The Cats welcome in Nebraska, Drake, Southern Utah, Purdue and Utah State for the three-day, 15-game event.

PRESEASON PAC-12 COACHES POLL

Team	Votes
1. California	62
2. Arizona State	56
3. Oregon	52
4. Washington	41
5. ARIZONA	32
6. Stanford	29
7. UCLA	28
8. Oregon State	16
9. Utah	9

USA TODAY/NFCA TOP 25

Rank	Team	Record	Totals	Last Poll
1	Alabama (25)	60-8	765	1
2	Oklahoma (5)	54-10	745	2
3	California (1)	58-7	704	3
4	Arizona State	53-11	684	4
5	Oregon	45-18	635	5
6	Tennessee	52-14	626	6
7	Texas	47-13	534	9
8	Missouri	47-14	496	11
9	Georgia	45-17	490	10
10	LSU	40-25	475	7
11	La. Lafayette	53-6	429	12
12	USF	50-14	423	8
13	ARIZONA	38-19	406	13
14	Florida	48-11	342	18
15	Michigan	42-17	326	15
16	Washington	39-19	316	14
17	Texas A&M	41-18	296	19
18	Louisville	55-5	255	17
19	UCLA	36-20	216	20
20	Hofstra	42-15	203	16
21	Stanford	40-19	183	21
22	North Carolina	43-15	102	24
23	Hawai'i	44-9	89	22
24	Baylor	34-22	80	RV
25	Florida State	47-16	58	RV

ESPN.COM/USA SOFTBALL TOP 25

Rank	Team	Record	Totals	Last Poll
1	Alabama (13)	60-8	490	1
2	Oklahoma (7)	54-10	486	2
3	California	58-7	449	3
4	Arizona State	53-11	445	4
5	Tennessee	52-14	414	7
6	Oregon	45-18	390	5
7	Missouri	47-14	346	11
8	Georgia	45-17	332	10
9	Texas	47-13	297	12
10	South Florida	50-14	285	8
11	La. Lafayette	53-6	272	9
12	LSU	40-25	263	6
13	Michigan	42-17	233	15
14	ARIZONA	38-19	226	13
15	Florida	48-13	225	16
16	Washington	39-19	213	14
17	Texas A&M	41-18	195	19
18	Louisville	55-5	188	18
19	UCLA	36-20	144	21
20	Stanford	40-19	131	20
21	North Carolina	43-15	69	25
T22	Baylor	34-22	67	RV
T22	Hofstra	42-15	67	17
24	Florida State	47-16	66	22
25	Hawaii	44-9	44	23

ARIZONA IN THE RANKINGS

Week	NFCA	USA	Week	NFCA	USA
Pre	13	14			

HITS, SEASON

No. Player	H	Year
1. Alison McCutcheon	132	1997
2. Amy Chellevoid	122	1994
3. Alison McCutcheon	117	1998
4. Amy Chellevoid	112	1995
5. Lauren Bauer	104	2001
Brittany Lastrapes	104	2009
7. Leah O'Brien	101	1995
Laura Espinoza	101	1995
9. Caitlin Lowe	100	2005
10. Leah O'Brien	99	1997

HITS, CAREER

No. Player	H	Years
1. Alison McCutcheon	405	95-98
2. Amy Chellevoid	371	92-95
3. Nicole Giordano	359	98-01
4. Caitlin Lowe	351	04-07
5. Lauren Bauer	349	98-01
6. Leah O'Brien	338	93-97
7. Brittany Lastrapes	337	08-11
8. Autumn Champion	314	03-06
9. Leah Braatz	297	94-98
10. Toni Mascarenas	293	98-01
Brigette Del Ponte	180	10-

DOUBLES, SEASON

No. Player	2B	Year
1. Brigette Del Ponte	23	2011
2. Leah O'Brien	21	1995
Lovianne Jung	21	2003
4. K'Lee Arredondo	19	2008
Brittany Lastrapes	19	2009
6. Jenny Dalton	18	1994
7. Leticia Pineda	17	1996
Toni Mascarenas	17	1998
Toni Mascarenas	17	2000
Brittany Lastrapes	17	2010
Brittany Lastrapes	17	2011

DOUBLES, CAREER

No. Player	2B	Years
1. Brittany Lastrapes	66	08-11
2. Leah Braatz	59	94-98
3. Toni Mascarenas	55	98-01
4. Leah O'Brien	53	93-97
5. Laura Espinoza	52	92-95
7. Jenny Dalton	51	93-96
Nancy Evans	51	94-98
9. Alison McCutcheon	49	95-98
10. M. Vandergeest	48	01-04
Brigette Del Ponte	45	10-

TRIPLES, SEASON

No. Player	3B	Year
1. Julie Winkleplek	13	1979
2. Jamie Heggen	9	1992
3. Regina Rawson	6	1979
Jamie Wheat	6	1987
Alison McCutcheon	6	1995
Alison McCutcheon	6	1996
Andrea Doty	6	1996
8. Gail Davenport	5	1977
Rocky LaRose	5	1979
Jamie Heggen	5	1991
Jody Miller	5	1991
Julie Jones	5	1991
Alison McCutcheon	5	1997
Alison McCutcheon	5	1998
Nicole Giordano	5	1998

TRIPLES, CAREER

No. Player	3B	Years
1. Alison McCutcheon	22	95-98
2. Jamie Heggen	18	91-92
3. Julie Winkleplek	17	79-81
4. Caitlin Lowe	12	04-07
5. Gail Davenport	10	76-79
Regina Rawson	10	79-82
Dee Dinota	10	81-84
8. Barb Garcia	9	78-81
Jody Pruitt	9	90-93
Amy Chellevoid	9	92-95
Brigette Del Ponte	2	10-

HOME RUNS, SEASON

No. Player	HR	Year
1. Laura Espinoza rh	37	1995
2. Stacie Chambers lh	31	2009
3. Laura Espinoza rh	30	1994
4. Jenny Dalton rh	28	1995
5. Jenny Dalton rh	25	1996
Leah Braatz rh	25	1998
Toni Mascarenas rh	25	2001
Lovianne Jung rh	25	2003
9. Jenae Leles rh	23	2009
10. Leah Braatz rh	21	1995
Leah Braatz rh	21	1997
Leneah Manuma lh	21	2002
Stacie Chambers lh	21	2010
BRIGETTE DEL PONTE RH	21	2010

HOME RUNS, CAREER

No. Player	HR	Years
1. Stacie Chambers lh	87	08-11
2. Laura Espinoza rh	85	92-95
Leah Braatz rh	85	94-98
4. Jenny Dalton rh	76	93-96
Lini Koria rh	61	09-12
6. M. Vandergeest rh	59	01-04
7. Jenae Leles rh	57	06-09
8. BRIGETTE DEL PONTE RH	53	10-
Leticia Pineda rh	52	95-98
Jackie Coburn rh	52	02-05
Chelsea Goodacre	8	12-

RUNS BATTED IN, SEASON

No. Player	RBI	Year
1. Laura Espinoza	128	1995
2. Stacie Dalton	109	1996
3. Leah Braatz	100	1998
4. Jenny Dalton	98	1995
5. Leticia Pineda	96	1996
6. Stacie Chambers	96	2009
7. Laura Espinoza	95	1994
8. Jenny Dalton	91	1994
9. Toni Mascarenas	84	2001
10. Brigette Del Ponte	80	2010

RUNS BATTED IN, CAREER

No. Player	RBI	Years
1. Jenny Dalton	328	93-96
2. Leah Braatz	322	94-98
3. Laura Espinoza	314	92-95
4. Stacie Chambers	293	08-11
5. M. Vandergeest	248	01-04
6. Toni Mascarenas	245	98-01
7. Leticia Pineda	240	95-98
8. Kristie Fox	230	04-07
9. Brittany Lastrapes	199	08-11
10. Jennie Finch	195	99-01
Brigette Del Ponte	195	10-
Hallie Wilson	28	12-

STOLEN BASES, SEASON

No. Player	SB/A	Year
1. A. McCutcheon	67-70	1998
2. Vivian Holm	49-53	1987
Caitlin Lowe	49-50	2007
4. A. McCutcheon	47-50	1997
Caitlin Lowe	47-50	2004
6. Lauren Bauer	43-45	1999
7. Vivian Holm	41-45	1990
Lauren Bauer	38-40	2000
Lauren Bauer	38-44	2001
10. Caitlin Lowe	33-35	2006

STOLEN BASES, CAREER

No. Player	SB	Years
1. Caitlin Lowe	156	04-07
2. A. McCutcheon	148	95-98
3. Lauren Bauer	133	98-01
4. Vivian Holm	129	87-90
5. Amy Chellevoid	113	92-95
6. Nicole Giordano	81	98-01
7. Toni Mascarenas	58	98-01
8. Julie Standerling	57	88-91
9. Autumn Champion	54	03-05
10. Kristin Gauthier	52	88-91
Brigette Del Ponte	20	10-

WALKS, SEASON

No. Player	BB	Year
1. Jenny Dalton	64	1996
2. Stacie Chambers	62	2010
3. Jenny Dalton	59	1995
4. Lovianne Jung	55	2003
5. Leah Braatz	53	1998
6. Leah Braatz	45	1997
7. Leah Braatz	44	1995
Lovianne Jung	44	2002
9. Leneah Manuma	41	2002
Jenae Leles	41	2009

WALKS, CAREER

No. Player	BB	Years
1. Jenny Dalton	178	93-96
2. Leah Braatz	173	94-98
3. Stacie Chambers	158	08-11
4. Brittany Lastrapes	137	08-11
5. Jenae Leles	132	06-09
6. Lini Koria	120	09-12
7. M. Vandergeest	116	01-04
8. Nancy Evans	112	94-98
9. Toni Mascarenas	111	98-01
10. Jennie Finch	105	99-02
Brigette Del Ponte	77	10-

VICTORIES, SEASON

No. Player	W-L	Year
1. Taryne Mowatt	42-12	2007
2. Alicia Hollowell	41-4	2004
3. Alicia Hollowell	40-5	2003
4. Kenzie Fowler	38-9	2010
5. Nancy Evans	36-2	1997
Nancy Evans	36-2	1998
7. Carrie Dolan	35-6	1996
8. Jennie Finch	34-6	2002
9. Susie Parra	33-1	1994
Carrie Dolan	33-2	1995
11. Jennie Finch	32-0	2001
Alicia Hollowell	32-5	2006
Debbie Day	32-5	1992
Teresa Cherry	32-11	1988
15. Nancy Evans	31-4	1995
Alicia Hollowell	31-9	2005
17. Becky Lemke	30-7	2000
Debbie Day	30-8	1991

VICTORIES, CAREER

No. Player	W-L	Years
1. Alicia Hollowell	134-23	03-06
2. Nancy Evans	124-8	94-98
3. Jennie Finch	119-16	99-02
4. Carrie Dolan	103-13	94-97
5. Becky Lemke	103-19	98-01
6. Susie Parra	101-9	91-94
7. Taryne Mowatt	100-33	05-08
8. Kenzie Fowler	79-27	10-
9. Teresa Cherry	71-33	85-88
10. Debbie Day	62-13	91-92
Shelby Babcock	38-18	11-

STRIKEOUTS, SEASON

No. Player	SO	Year
1. Taryne Mowatt	522	2007
2. Alicia Hollowell	508	2004
3. Alicia Hollowell	446	2005
4. Alicia Hollowell	420	2006
5. Taryne Mowatt	413	2008
6. Alicia Hollowell	394	2003
7. Kenzie Fowler	371	2010
8. Jennie Finch	366	2002
9. Becky Lemke	314	2000
10. Jennie Finch	279	2001

STRIKEOUTS, CAREER

No. Player	SO	Years
1. Alicia Hollowell	1768	03-06
2. Taryne Mowatt	1267	05-08
3. Jennie Finch	1028	99-01
4. Becky Lemke	916	98-01
5. Susie Parra	874	91-94
6. Kenzie Fowler	794	10-
7. Nancy Evans	733	94-98
8. Jenny Gladding	358	01-02
9. Pam Stone	343	82-84
10. Debbie Day	334	91-92
Shelby Babcock	281	11-

INNINGS PITCHED, SEASON

No. Player	IP	Year
1. Taryne Mowatt	370.0	2007
2. Teresa Cherry	301.1	1988
3. Alicia Hollowell	297.0	2003
4. Alicia Hollowell	293.2	2004
5. Taryne Mowatt	285.2	2008
6. Kenzie Fowler	284.1	2010
7. Alicia Hollowell	279.0	2005
8. Jennie Finch	273.1	2002
9. Debbie Day	268.1	1991
10. Carrie Dolan	264.0	1996

INNINGS PITCHED, CAREER

No. Player	IP	Years
1. Alicia Hollowell	1122.0	03-06
2. Taryne Mowatt	877.2	05-08
3. Jennie Finch	876.2	99-02
4. Nancy Evans	835.2	94-98
5. Becky Lemke	781.0	98-01
6. Susie Parra	780.0	91-94
7. Carrie Dolan	755.3	94-97
8. Teresa Cherry	730.1	85-88
9. Kenzie Fowler	652.1	10-
10. Jo Loganewer	534.0	79-82
Shelby Babcock	367.2	11-

SEASON SHUTOUTS (Solo/combined)

No. Player	Shutouts	Year
1. Alicia Hollowell	22/3	2003
2. Debbie Day	22/0	1992
3. Alicia Hollowell	21/3	2004
4. Jennie Finch	21/1	2002
5. Alicia Hollowell	20/0	2006
6. Nancy Evans	20/1	1998
7. Taryne Mowatt	19/1	2007
8. Debbie Day	19/1	1991
9. Jennie Finch	19/1	2001
10. Susie Parra	19/0	1992

PLAYER AWARDS, by player

SHELBY BABCOCK

2012

Pac-12 Pitcher of the Week (4/9-4/15)

2011

Pac-10 All-Freshman

BRIGETTE DEL PONTE

2013

USA Softball Player of the Year Watchlist (50 Players)

2012

All-Pac-12 (Second Team)

Pac-12 Player of the Week (2/20-2/26)

USA Softball Player of the Year Watchlist (50 Players)

2011

NFCA All-American (Second Team)

USA Softball National Team Selection Camp Invitee

NFCA All-West Region (First Team)

All-Pac-10 (First Team)

Pac-10 Player of the Week (3/21-3/27)

2010

All-Pac-10 (Second Team)

Pac-10 All-Freshman

NFCA All-West Region (Second Team)

Pac-10 Player of the Week (3/1-3/7)

KENZIE FOWLER

2012

USA Softball Player of the Year Watchlist (50 Players)

2011

NFCA All-American (Second Team)

Pac-10 All-Academic (Honorable Mention)

NFCA All-West Region (First Team)

All-Pac-10 (Second Team)

USA Softball Player of the Year Finalist (25 Players)

USA Softball Player of the Week (3/28-4/3)

Pac-10 Player of the Week (3/28-4/3)

USA Softball Player of the Year Watchlist (50 Players)

ESPN Preseason All-American

2010

NFCA All-American (First Team)

All-WCWS

All-Pac-10 (First Team)

Pac-10 All-Freshman

NFCA All-West Region (First Team)

NFCA Player of the Week (3/8-3/15)

Pac-10 Pitcher of the Week (3/8-3/15)

USA Softball Player of the Week (4/15-4/22)

Pac-10 Pitcher of the Week (4/15-4/22)

USA Softball Player of the Year Finalist (10 Players)

USA Softball Player of the Year Finalist (25 Players)

CHELSEA GOODACRE

2012

Pac-12 All-Freshman (Honorable Mention)

ALEX LAVINE

2011

Pac-10 All-Freshman (Honorable Mention)

CHELSEA SUITOS

2012

Pac-12 All-Freshman (Honorable Mention)

HALLIE WILSON

2012

All-Pac-12 (Second Team)

Pac-12 All-Freshman

RECENTLY RELEASED

ARIZONA PICKED FIFTH BY PAC-12 COACHES IN PRESEASON POLL

In a vote of the conference's coaches, Arizona was selected fifth in the Pac-12 Preseason Coaches Poll. Arizona received 32 votes during the process.

Defending conference champion California was picked to finish first, receiving seven of the eight first-place votes. Arizona State was slated second, receiving a first-place vote of its own.

Oregon was picked to finish third, while Washington was selected fourth.

TWO CATS NAMED TO USA SOFTBALL PLAYER OF THE YEAR "WATCH LIST"

Two Wildcats were named to the 2013 USA Softball Collegiate Player of the Year "Watch List", the Amateur Softball Association (ASA) announced Friday. Sophomore Hallie Wilson and senior Brigette Del Ponte were two of 50 players to receive the honor.

This marks the second consecutive season Del Ponte has received this recognition. Wilson's citation is her first such, as it is her first year eligible to be placed on the "Watch List".

In just three seasons, Del Ponte, a shortstop from Peoria, Ariz., has already hit herself into the Arizona record books and sits in the top 10 in career home runs (8th - 53), RBI (10th - 195) and assists (9th - 356) and sits just outside top 10 in doubles (11th - 45). The senior possesses a career .328 batting average to go along with a .708 slugging percentage and .417 career on-base percentage.

In her freshman campaign, Wilson, a first baseman and centerfielder from Santa Ana, Calif., led the team in batting average with a .346 clip, making her the first freshman since Brittany Lastrapes in 2008 to lead the squad in batting average. The sophomore knocked 12 doubles, a pair of home runs and drove in 28 runs while spending most of the season as the team's leadoff hitter.

ESPN.COM/USA SOFTBALL PRESEASON POLL PUTS UA 14TH

University of Arizona Wildcat Softball is ranked 14th in ESPN.com/USA Softball Collegiate Top 25 Pre-season Poll, released Tuesday. UA finished 13th in 2012 rankings.

The ESPN.com/USA Softball poll is the second softball top 25 to be announced. Arizona was tabbed 13th in the USA Today/NFCA Division I Top 25 Pre-season Poll, released last week.

Defending champion Alabama received the top spot in the preseason poll, receiving 13-of-20 first-place votes. The remaining seven went to 2012 runner-up Oklahoma. California, Arizona State and Tennessee round out the top five.

SOFTBALL TABBED AS PRESEASON NO. 13 BY NFCA

University of Arizona Wildcat Softball was tabbed No. 13 in the USA Today/NFCA Division I Top 25 Pre-season Poll, released Tuesday.

Arizona will begin the season where it ended last season - ranked 13th.

Defending champion Alabama is ranked No. 1 and received 25 of the 31 first-place votes. 2012 runner-up Oklahoma received five first-place votes and is preseason No. 2.

PLAYER AWARDS, by player (cont.)

HEAD COACH MIKE CANDREA

2011 U.S. Olympic Achievement Award

2009 Central Arizona College Hall of Fame

2008 Silver medalist, U.S. Softball Team head coach, Beijing Olympics

2007 Pac-10 Coach of the Year

2007 NFCA Coaching Staff of the Year

2004 USOC Olympic Shield award

2004 USOC Coach of the Year

2004 Gold medalist, U.S. Softball Team head coach, Athens Olympics

2003 Pac-10 Coach of the Year

2002 Pac-10 Coach of the Year

2001 Pac-10 Coach of the Year

2000 Pac-10 Coach of the Year

1999 University of Arizona Honorary Alumnus Degree

1998 Pac-10 Coach of the Year

1997 NFCA Division I Coach of the Year

1997 Pacific Region Coach of the Year

1997 Pac-10 Coach of the Year

1996 NFCA Division I Coach of the Year

1996 NFCA Hall of Fame election

1995 Pacific Region Coach of the Year

1994 NSCA Division I Coach of the Year

1994 Pacific Region Coach of the Year

1994 Pac-10 Coach of the Year

1988 Northwest Region Coach of the Year

1986 Pacific-West Co-Coach of the Year

1985 NJCAA Coach of the Year

1984 NJCAA Coach of the Year

SHELBY BABCOCK - #12



5-10, Junior, 2L
Pitcher
Bats – R, Throws – R
Hometown: Broomfield, Colo.

Season Highs:

Innings pitched: N/A
Walks allowed: N/A
Strikeouts: N/A
Batters faced: N/A

Career Highs:

Innings pitched: 7.0, 20 times
Walks allowed: 9, Oregon, Apr 29, 2011 ; at UCLA, May 05, 2012
Strikeouts: 9, vs McNeese State, Feb 09, 2012 ; Oregon State, May 12, 2012
Batters faced: 45, Oregon, Apr 28, 2012

NANCY BOWLING - #6



5-8, Freshman, HS
Pitcher
Bats – R, Throws – R
Hometown: Simi Valley, Calif.

Season Highs:

Innings pitched: N/A
Walks allowed: N/A
Strikeouts: N/A
Batters faced: N/A

Career Highs:

Innings pitched: *Same*
Walks allowed: *Same*
Strikeouts: *Same*
Batters faced: *Same*

BRIGETTE DEL PONTE - #4



5-3, Senior, 3L
Infield
Bats – R, Throws – R
Hometown: Peoria, Ariz.

Season Highs:

Hits: N/A
Doubles: N/A
Home runs: N/A
Total bases: N/A
RBI: N/A
Runs scored: N/A
Stolen bases: N/A

Career Highs:

Hits: 4, at Notre Dame, May 19, 2012
Doubles: 3, Col. of Charleston, Mar 03, 2012
Home runs: 2, 4 times
Total bases: 8, 4 times
RBI: 7, at California, Apr 30, 2010
Runs scored: 3, 4 times
Stolen bases: 2, North Dakota State, May 18, 2012

KENZIE FOWLER - #19



5-11, Junior, 2L
Pitcher
Bats – R, Throws – R
Hometown: Tucson, Ariz.

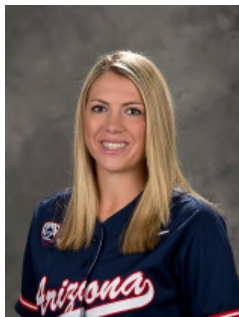
Season Highs:

Innings pitched: N/A
Walks allowed: N/A
Strikeouts: N/A
Batters faced: N/A

Career Highs:

Innings pitched: 11.1, Hofstra, May 23, 2010
Walks allowed: 9, at Arizona State, Apr 01, 2010 ; Hofstra, May 23, 2010
Strikeouts: 18, vs Northwestern, Feb 13, 2010
Batters faced: 57, Hofstra, May 23, 2010

KELLIE FOX - #29



5-10, Junior, TR
Shortstop
Bats – R, Throws – R
Hometown: San Diego, Calif.

-- Must sit out 2013 due to NCAA transfer rules --

CHELSEA GOODACRE - #77



5-4, Sophomore, 1L
Catcher
Bats – L, Throws – R
Hometown: Temecula, Calif.

Season Highs:

Hits: N/A
Doubles: N/A
Home runs: N/A
Total bases: N/A
RBI: N/A
Runs scored: N/A

Career Highs:

Hits: 3, at California, Apr 14, 2012
Doubles: 1, 5 times
Home runs: 2, vs Oklahoma State, Feb 24, 2012 ; at Notre Dame, May 20, 2012
Total bases: 8, vs Oklahoma State, Feb 24, 2012 ; at Notre Dame, May 20, 2012
RBI: 3, vs Oklahoma State, Feb 24, 2012
Runs scored: 2, vs Oklahoma State, Feb 24, 2012 ; North Dakota State, May 18, 2012 ; at Notre Dame, May 20, 2012

ALEX LAVINE - #7



5-4, Junior, 2L
Centerfield
Bats – L, Throws – R
Hometown: Glendale, Ariz.

Season Highs:

Hits: N/A
Doubles: N/A
Home runs: N/A
Total bases: N/A
RBI: N/A
Runs scored: N/A

Career Highs:

Hits: 2, 6 times
Doubles: 1, Arizona State, Apr 22, 2011 ; Idaho State, Mar 05, 2011 ; Cal State Northridge, Mar 27, 2011
Home runs: 1, 4 times
Total bases: 7, vs San Jose State, Mar 19, 2011
RBI: 3, Cal State Northridge, Mar 27, 2011 ; San Diego State, Mar 28, 2012
Runs scored: 2, at Stanford, Apr 02, 2011 ; vs San Jose State, Mar 19, 2011
Stolen bases: 1, at Stanford, Apr 03, 2011 ; vs Nebraska, Feb 11, 2011

MANDIE PEREZ - #55



5-2, Freshman, HS
Utility
Bats – L, Throws – R
Hometown: Whittier, Calif.

Season Highs:

Hits: N/A
Doubles: N/A
Home runs: N/A
Total bases: N/A
RBI: N/A
Runs scored: N/A

Career Highs:

Hits: *Same*
Doubles: *Same*
Home runs: *Same*
Total bases: *Same*
RBI: *Same*
Runs scored: *Same*

ESTELA PINON - #32



5-10, Junior, TR
Pitcher
Bats – R, Throws – R
Hometown: Tucson, Ariz.

Season Highs:
Innings pitched: N/A
Walks allowed: N/A
Strikeouts: N/A
Batters faced: N/A

Arizona Career Highs:
Innings pitched: N/A
Walks allowed: N/A
Strikeouts: N/A
Batters faced: N/A

COURTNEY RODRIGUEZ - #18



5-6, Freshman, HS
Outfield
Bats – L, Throws – R
Hometown: Scottsdale, Ariz.

Season Highs:
Hits: N/A
Doubles: N/A
Home runs: N/A
Total bases: N/A
RBI: N/A
Runs scored: N/A
Stolen bases: N/A

Career Highs:
Hits: *Same*
Doubles: *Same*
Home runs: *Same*
Total bases: *Same*
RBI: *Same*
Runs scored: *Same*
Stolen bases: *Same*

KESLEY RODRIGUEZ - #24



5-6, Junior, TR
Catcher
Bats – R, Throws – R
Hometown: Scottsdale, Ariz.

Season Highs:
Hits: N/A
Doubles: N/A
Home runs: N/A
Total bases: N/A
RBI: N/A
Runs scored: N/A
Stolen bases: N/A

Career Highs:
Hits: *Same*
Doubles: *Same*
Home runs: *Same*
Total bases: *Same*
RBI: *Same*
Runs scored: *Same*
Stolen bases: *Same*

GABBIE SANDSTEDT - #28



5-5, Freshman, HS
Outfield
Bats – R, Throws – R
Hometown: Glendale, Ariz.

Season Highs:
Hits: N/A
Doubles: N/A
Home runs: N/A
Total bases: N/A
RBI: N/A
Runs scored: N/A
Stolen bases: N/A

Career Highs:
Hits: *Same*
Doubles: *Same*
Home runs: *Same*
Total bases: *Same*
RBI: *Same*
Runs scored: *Same*
Stolen bases: *Same*

CHELSEA SUITOS - #3

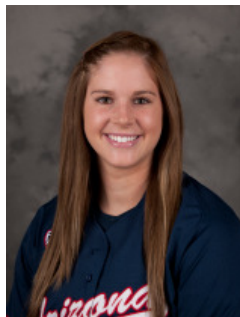


5-5, RS Sophomore, 1L
Utility
Bats – L, Throws – R
Hometown: Elk Grove, Calif.

Season Highs:
Hits: N/A
Doubles: N/A
Total bases: N/A
RBI: N/A
Runs scored: N/A
Stolen bases: N/A

Career Highs:
Hits: 2, 12 times
Doubles: 1, 4 times
Total bases: 3, vs Fordham, Feb 25, 2012 ; Oregon State, May 10, 2012
RBI: 2, vs UC Davis, Mar 16, 2012
Runs scored: 2, 4 times
Stolen bases: 2, Utah, Apr 10, 2012

DARCY TAYLOR - #00



6-0, Freshman, HS
First Base
Bats – R, Throws – R
Hometown: Jenks, Okla.

Season Highs:
Hits: N/A
Doubles: N/A
Home runs: N/A
Total bases: N/A
RBI: N/A
Runs scored: N/A

Career Highs:
Hits: *Same*
Doubles: *Same*
Home runs: *Same*
Total bases: *Same*
RBI: *Same*
Runs scored: *Same*

HALLIE WILSON - #5



5-5, Sophomore, 1L
First Base
Bats – L, Throws – L
Hometown: Santa Ana, Calif.

Season Highs:
Hits: N/A
Doubles: N/A
Home runs: N/A
Total bases: N/A
RBI: N/A
Runs scored: N/A

Career Highs:
Hits: 4, New Mexico State, Mar 21, 2012
Doubles: 2, vs Nebraska, Feb 10, 2012 ; North Dakota, Feb 17, 2012
Home runs: 1, at Washington, Apr 07, 2012 ; New Mexico State, Mar 21, 2012
Total bases: 5, vs Nebraska, Feb 10, 2012 ; New Mexico State, Mar 21, 2012
RBI: 4, Southern Utah, Feb 18, 2012
Runs scored: 2, 7 times

LAUREN YOUNG - #9



5-7, Freshman, HS
Third Base
Bats – R, Throws – R
Hometown: Anaheim Hills, Calif.

Season Highs:
Hits: N/A
Doubles: N/A
Home runs: N/A
Total bases: N/A
RBI: N/A
Runs scored: N/A
Stolen bases: N/A

Career Highs:
Hits: *Same*
Doubles: *Same*
Home runs: *Same*
Total bases: *Same*
RBI: *Same*
Runs scored: *Same*
Stolen bases: *Same*

Overall:	0-0	Pac-12:	0-0	Away:	0-0
Home:	0-0	Road (inc. neutral):	0-0	Extra-Innings:	0-0
Neutral:	0-0	vs. Ranked:	0-0	Less than 7 innings:	0-0

Date	(Rank) Opponent	Score (Inn.)	Winning Pitcher	Losing Pitcher	UA/Opponent Hits	Home Attendance
2/8	vs. Northwestern!					
2/8	vs. Bradley!					
2/9	vs. Cal Poly!					
2/9	vs. San Diego State!					
2/10	vs. Florida!					
2/15	Nebraska#					
2/15	Drake#					
2/16	Southern Utah#					
2/16	Purdue#					
2/17	Utah State#					
2/21	vs. Oklahoma\$					
2/21	vs. Long Beach State\$					
2/22	vs. Ohio State\$					
2/22	vs. Loyola Marymount\$					
2/23	vs. LSU\$					
3/1	UC Riverside~					
3/1	Boston~					
3/2	Boston~					
3/2	Portland State~					
3/3	Portland State~					
3/8	Boise State					
3/9	Boise State					
3/9	Boise State					
3/14	vs. Virginia Tech^					
3/14	vs. Notre Dame^					
3/15	vs. Penn State^					
3/15	vs. Michigan^					
3/16	vs. Oklahoma^					
3/23	Washington*					
3/24	Washington*					
3/25	Washington*					
3/28	@ Utah*					
3/29	@ Utah*					
3/30	@ Utah*					
4/2	California*					
4/3	California*					
4/4	California*					
4/6	UC Santa Barbara					
4/7	UC Santa Barbara					
4/9	@ New Mexico State					
4/9	@ New Mexico State					
4/12	@ Oregon*					
4/13	@ Oregon*					
4/14	@ Oregon*					
4/18	UCLA*					
4/19	UCLA*					
4/20	UCLA*					
4/26	@ Oregon State*					
4/27	@ Oregon State*					
4/28	@ Oregon State*					
5/3	Arizona State*					
5/4	Arizona State*					
5/5	Arizona State*					
5/9	@ Stanford*					
5/10	@ Stanford*					
5/11	@ Stanford*					

(NFCA Ranking); ! - Kajikawa Classic // Tempe, Ariz.; # - Hillenbrand Invitational // Tucson; \$ - Mary Nutter Collegiate Classic // Palm Springs, Calif.; ~ - Wildcat Invitational // Tucson; ^ - Judi Garman Classic // Fullerton, Calif.; *Pac-12 Game

Total Home Attendance: N/A

Average: N/A

ALPHABETICAL

No.	Name	Pos.	B/T	Ht.	Yr.	Exp.	Hometown (Last School)
12	Shelby Babcock	P	R/R	5-10	Jr.	2L	Broomfield, Colo. (Legacy H.S.)
6	Nancy Bowling	P	R/R	5-8	Fr.	HS	Simi Valley, Calif. (Royal H.S.)
4	Brigette Del Ponte	INF	R/R	5-3	Sr.	3L	Peoria, Ariz. (Sunrise Mountain H.S.)
19	Kenzie Fowler	P	R/R	5-11	Sr.	3L	Tucson, Ariz. (Canyon del Oro H.S.)
29	Kellie Fox	SS	R/R	5-10	Jr.	TR	San Diego, Calif. (UCLA)
77	Chelsea Goodacre	C	L/R	5-4	So.	1L	Temecula, Calif. (Temecula Valley H.S.)
7	Alex Lavine	UT	R/R	5-4	Jr.	2L	Glendale, Ariz. (Mountain Ridge H.S.)
55	Mandie Perez	2B	L/R	5-2	Fr.	HS	Whittier, Calif. (Whittier Christian H.S.)
32	Estela Piñon	P	R/R	5-10	Jr.	TR	Tucson, Ariz. (Yavapai College)
18	Courtney Rodriguez	UT	L/R	5-6	Fr.	HS	Scottsdale, Ariz. (Seton Catholic Prep)
24	Kelsey Rodriguez	C	R/R	5-6	Jr.	TR	Scottsdale, Ariz. (Pacific)
28	Gabby Sandstedt	OF	L/L	5-5	Fr.	HS	Glendale, Ariz. (Independence H.S.)
3	Chelsea Suitos	2B	L/R	5-5	So.*	1L	Elk Grove, Calif. (Elk Grove H.S.)
00	Darcy Taylor	1B	R/R	6-0	Fr.	HS	Jenks, Okla. (Jenks H.S.)
5	Hallie Wilson	OF	L/L	5-5	So.	1L	Santa Ana, Calif. (Foothill H.S.)
9	Lauren Young	INF	R/R	5-7	Fr.	HS	Anaheim Hills, Calif. (Canyon H.S.)

NUMERICAL

No.	Name	Pos.	B/T	Ht.	Yr.	Exp.	Hometown (Last School)
00	Darcy Taylor	1B	R/R	6-0	Fr.	HS	Jenks, Okla. (Jenks H.S.)
3	Chelsea Suitos	2B	L/R	5-5	So.*	1L	Elk Grove, Calif. (Elk Grove H.S.)
4	Brigette Del Ponte	INF	R/R	5-3	Sr.	3L	Peoria, Ariz. (Sunrise Mountain H.S.)
5	Hallie Wilson	OF	L/L	5-5	So.	1L	Santa Ana, Calif. (Foothill H.S.)
6	Nancy Bowling	P	R/R	5-8	Fr.	HS	Simi Valley, Calif. (Royal H.S.)
7	Alex Lavine	UT	R/R	5-4	Jr.	2L	Glendale, Ariz. (Mountain Ridge H.S.)
9	Lauren Young	INF	R/R	5-7	Fr.	HS	Anaheim Hills, Calif. (Canyon H.S.)
12	Shelby Babcock	P	R/R	5-10	Jr.	2L	Broomfield, Colo. (Legacy H.S.)
18	Courtney Rodriguez	UT	L/R	5-6	Fr.	HS	Scottsdale, Ariz. (Seton Catholic Prep)
19	Kenzie Fowler	P	R/R	5-11	Sr.	3L	Tucson, Ariz. (Canyon del Oro H.S.)
24	Kelsey Rodriguez	C	R/R	5-6	Jr.	TR	Scottsdale, Ariz. (Pacific)
28	Gabby Sandstedt	OF	L/L	5-5	Fr.	HS	Glendale, Ariz. (Independence H.S.)
29	Kellie Fox	SS	R/R	5-10	Jr.	TR	San Diego, Calif. (UCLA)
32	Estela Piñon	P	R/R	5-10	Jr.	TR	Tucson, Ariz. (Yavapai College)
55	Mandie Perez	2B	L/R	5-2	Fr.	HS	Whittier, Calif. (Whittier Christian H.S.)
77	Chelsea Goodacre	C	L/R	5-4	So.	1L	Temecula, Calif. (Temecula Valley H.S.)

COACHES

Head Coach – Mike Candrea
 Assistant Coaches – Stacy Iveson and Alicia Hollowell
 Volunteer Assistant Coach – Mark Blair
 Undergraduate Assistant Coach – Jessica Spigner
 Director of Operations – Caitlin Lowe
 Managers – Brandon Young, James Nardi and Ariana Isom

Roster Breakdown

By Year:

Seniors - 2
 Juniors - 4
 Sophomores - 3
 Freshmen - 6

By Position:

Pitchers - 4
 Catchers - 2
 Infielders - 5
 Outfielders - 2
 Utility - 2

By Hitters:

Right - 9
 Left - 6

By State:

California - 6
 Arizona - 7
 Colorado - 1
 Oklahoma - 1

Pronunciation Guide

Brigette Del Ponte: Del PON-tee
Alex Lavine: Luh-VEEN
Estela Piñon: Eh-STELL-uh Peen-YONE
Gabbie Sandstedt: SAND-stett
Chelsea Suitos: SWEE-tose
Hallie Wilson: HAL-lee
Stacy Iveson: IVE-sun
Jessica Spigner: SPIGE-nerr

Arizona Softball 2013
Overall Statistics for Arizona (as of Feb 07, 2013)
(All games Sorted by Batting avg)

Record: 38-19 Home: 24-5 Away: 4-10 Neutral: 10-4 Pac-12: 12-12

Player	avg	gp-gs	ab	r	h	2b	3b	hr	rbi	tb	slg%	bb	hp	so	gdp	ob%	sf	sh	sb-att	po	a	e	fld%
Wilson	.346	56-56	188	37	65	12	0	2	28	83	.441	23	4	18	0	.426	1	0	0-1	49	4	0	1.000
Pendley	.331	57-57	172	39	57	7	0	19	55	121	.703	22	2	38	2	.413	0	0	1-1	98	106	11	.949
Buchanan	.331	49-49	121	31	40	0	0	0	7	40	.331	18	4	12	1	.434	0	6	20-20	50	2	1	.981
Del Ponte	.328	57-57	180	45	59	14	2	15	56	122	.678	24	1	27	0	.408	1	2	14-15	73	126	12	.943
Koria	.316	57-57	152	37	48	6	0	16	35	102	.671	26	5	40	3	.429	1	6	1-1	276	16	1	.997
Suitos	.310	55-55	155	32	48	4	0	0	12	52	.335	13	3	36	0	.374	0	9	13-14	32	3	1	.972
Arriola	.261	55-55	153	33	40	8	0	9	33	75	.490	18	2	24	3	.347	0	6	2-3	83	67	2	.987
Spigner	.257	55-55	148	25	38	6	0	9	34	71	.480	31	10	38	1	.409	4	0	0-0	280	13	2	.993
Goodacre	.252	55-54	147	17	37	5	0	8	24	66	.449	13	10	20	1	.351	1	0	0-0	116	5	2	.984
Kirker	.211	20-4	19	1	4	1	0	1	9	8	.421	5	0	9	0	.375	0	0	0-0	15	0	0	1.000
Bryan	.206	37-12	34	11	7	0	0	0	3	7	.206	4	1	11	0	.300	1	0	3-3	6	0	0	1.000
Lavine	.125	41-4	24	1	3	0	0	1	5	6	.250	1	0	4	0	.160	0	1	0-0	13	0	1	.929
Davis	.000	37-0	2	18	0	0	0	0	0	0	.000	0	0	1	0	.000	0	0	3-4	0	0	0	.000
Fowler	.000	1-1	0	0	0	0	0	0	0	0	.000	0	0	0	0	.000	0	0	0-0	3	17	1	.952
Babcock	.000	2-2	0	0	0	0	0	0	0	0	.000	0	0	0	0	.000	0	0	0-0	12	28	1	.976
Totals	.298	57	1495	327	446	63	2	80	301	753	.504	198	42	278	11	.393	9	30	57-62	1106	387	35	.977
Opponents	.233	57	1389	179	323	43	4	39	168	491	.353	199	30	348	9	.340	5	28	25-31	1060	368	86	.943

LOB - Team (387), Opp (367). DPs turned - Team (15), Opp (20). CI - Team (1), Goodacre 1. IBB - Team (1), Del Ponte 1, Opp (1). Picked off - Arriola 1, Bryan 1, Spigner 1, Del Ponte 1.

(All games Sorted by Earned run avg)

Player	era	w-l	app	gs	cg	sho	sv	ip	h	r	er	bb	so	2b	3b	hr	b/avg	wp	hp	bk	sfa	sha
Fowler	2.85	15-9	30	24	15	8/0	2	154.2	126	83	63	93	180	16	2	16	.218	8	14	0	2	11
Spigner	2.88	2-0	6	2	2	1/0	0	17.0	18	7	7	6	4	2	0	1	.273	1	1	0	0	0
Babcock	3.02	21-10	39	31	23	7/0	1	197.0	179	89	85	100	164	25	2	22	.240	12	15	0	3	17
Totals	2.94	38-19	57	57	40	16/0	3	368.2	323	179	155	199	348	43	4	39	.233	21	30	0	5	28
Opponents	5.23	19-38	57	57	27	5/0	1	353.1	446	327	264	198	278	63	2	80	.298	26	42	4	9	30

PB - Team (12), Goodacre 8, Koria 4, Opp (10). Pickoffs - Team (2), Koria 1, Goodacre 1, Opp (4). SBA/ATT - Koria (21-25), Fowler (13-17), Babcock (11-13), Goodacre (4-6), Spigner (1-1).

Arizona Softball 2013
Conference statistics for Arizona (as of Feb 07, 2013)
(Pac-12 games only Sorted by Batting avg)

Record: 12-12 Home: 8-4 Away: 4-8 Pac-12: 12-12

Player	avg	gp-gs	ab	r	h	2b	3b	hr	rbi	tb	slg%	bb	hp	so	gdp	ob%	sf	sh	sb-att	po	a	e	fld%
Buchanan	.392	19-19	51	8	20	0	0	0	4	20	.392	6	0	5	0	.456	0	3	7-7	25	2	0	1.000
Wilson	.361	23-23	72	15	26	1	0	1	8	30	.417	13	1	8	0	.460	1	0	0-0	21	2	0	1.000
Pendley	.325	24-24	80	14	26	2	0	4	16	40	.500	4	1	21	1	.365	0	0	0-0	46	43	5	.947
Goodacre	.281	22-21	57	4	16	1	0	1	3	20	.351	5	5	9	0	.388	0	0	0-0	37	3	2	.952
Koria	.270	24-24	63	12	17	2	0	8	17	43	.683	13	2	13	2	.405	1	1	1-1	116	7	0	1.000
Arriola	.265	22-22	68	12	18	3	0	5	11	36	.529	2	0	14	1	.286	0	2	1-1	33	32	1	.985
Del Ponte	.250	24-24	80	16	20	4	1	7	22	47	.588	8	0	16	0	.318	0	0	4-4	29	60	7	.927
Suitos	.250	22-22	60	9	15	2	0	0	2	17	.283	6	0	19	0	.318	0	5	6-6	15	3	1	.947
Bryan	.211	15-8	19	5	4	0	0	0	2	4	.211	3	1	7	0	.348	0	0	0-0	5	0	0	1.000
Spigner	.171	24-24	70	9	12	2	0	2	9	20	.286	8	5	20	0	.298	1	0	0-0	132	6	1	.993
Kirker	.167	9-3	12	1	2	1	0	1	7	6	.500	1	0	7	0	.231	0	0	0-0	0	0	0	.000
Lavine	.083	21-2	12	0	1	0	0	0	0	1	.083	0	0	2	0	.083	0	0	0-0	6	0	1	.857
Davis	.000	9-0	1	4	0	0	0	0	0	0	.000	0	0	0	0	.000	0	0	0-0	0	0	0	.000
Babcock	.000	2-2	0	0	0	0	0	0	0	0	.000	0	0	0	0	.000	0	0	0-0	7	16	1	.958
Fowler	.000	1-1	0	0	0	0	0	0	0	0	.000	0	0	0	0	.000	0	0	0-0	2	8	1	.909
Totals	.274	24	645	109	177	18	1	29	101	284	.440	69	15	141	4	.357	3	11	19-19	474	182	20	.970
Opponents	.262	24	615	109	161	20	3	20	103	247	.402	104	14	132	4	.380	2	15	10-15	479	170	30	.956

LOB - Team (155), Opp (168). DPs turned - Team (7), Opp (9). CI - Team (1), Goodacre 1. IBB - Team (1), Del Ponte 1, Opp (1).
Picked off - Spigner 1, Del Ponte 1.

(Pac-12 games only Sorted by Earned run avg)

Player	era	w-l	app	gs	cg	sho	sv	ip	h	r	er	bb	so	2b	3b	hr	b/avg	wp	hp	bk	sfa	sha
Fowler	3.79	5-7	14	10	5	1/0	1	61.0	61	45	33	46	62	8	1	7	.257	2	7	0	1	5
Babcock	4.28	7-5	18	14	8	1/0	1	90.0	88	58	55	54	69	11	2	12	.254	6	7	0	1	10
Spigner	6.00	0-0	4	0	0	0/0	0	7.0	12	6	6	4	1	1	0	1	.387	1	0	0	0	0
Totals	4.16	12-12	24	24	13	2/0	2	158.0	161	109	94	104	132	20	3	20	.262	9	14	0	2	15
Opponents	3.99	12-12	24	24	14	3/0	1	159.2	177	109	91	69	141	18	1	29	.274	10	15	2	3	11

PB - Team (6), Koria 3, Goodacre 3, Opp (3). Pickoffs - Team (0), Opp (2). SBA/ATT - Koria (9-13), Fowler (4-8), Babcock (6-7), Goodacre (1-2).